

ERTRAC National Platforms Workshop

logistop 
Plataforma Tecnológica en Logística Integral

Fernando Liesa
Coordinator

Budapest

5th September, 2008

logistop 
Plataforma Tecnológica en Logística Integral

Scope

Logistop is the Spanish Official TP in the field of Logistics. Established in June 2006 and recognized as a TP by the Spanish Ministry of Science and Innovation.

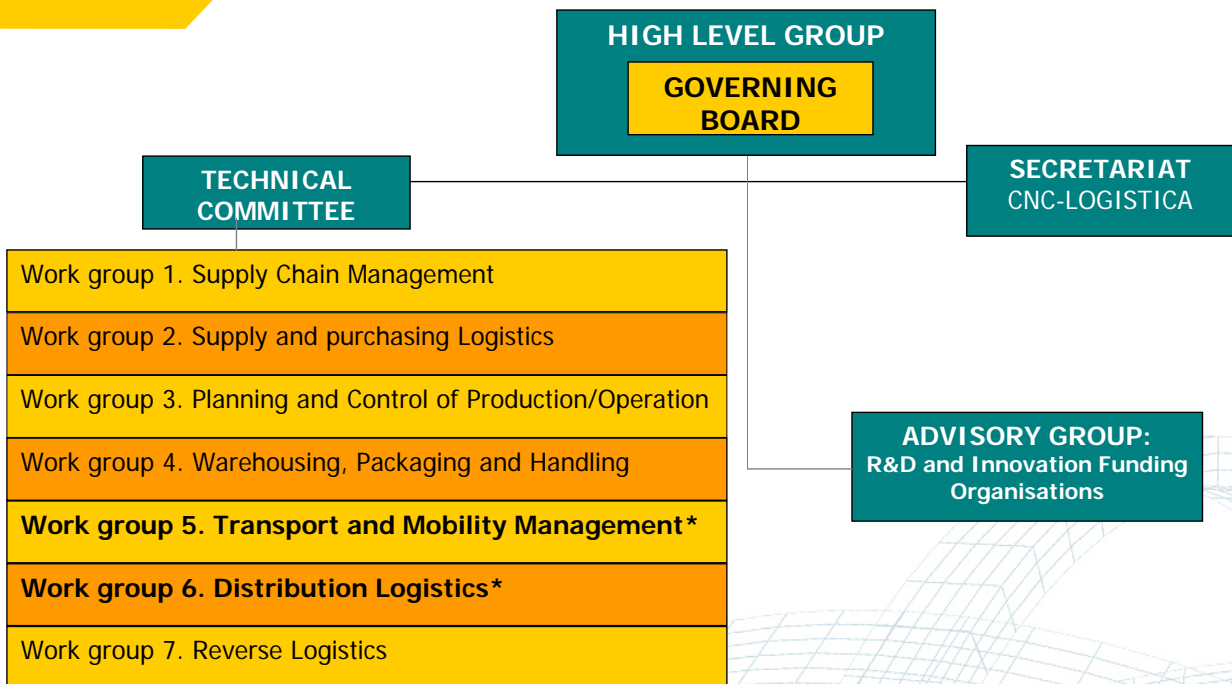
Scope of Logistop in brief:

Logistics as a wide concept, including all the activities in the organization and among organizations related to the **transportation of goods and passengers**, flow of information, etc.

It includes: Supply Chain Management, **Intermodality/Co-modality, Transportation Management, Mobility**, Safety and Security, Logistics and Transportation Sustainability, etc.

Logistop integrates mainly the following subsectors:

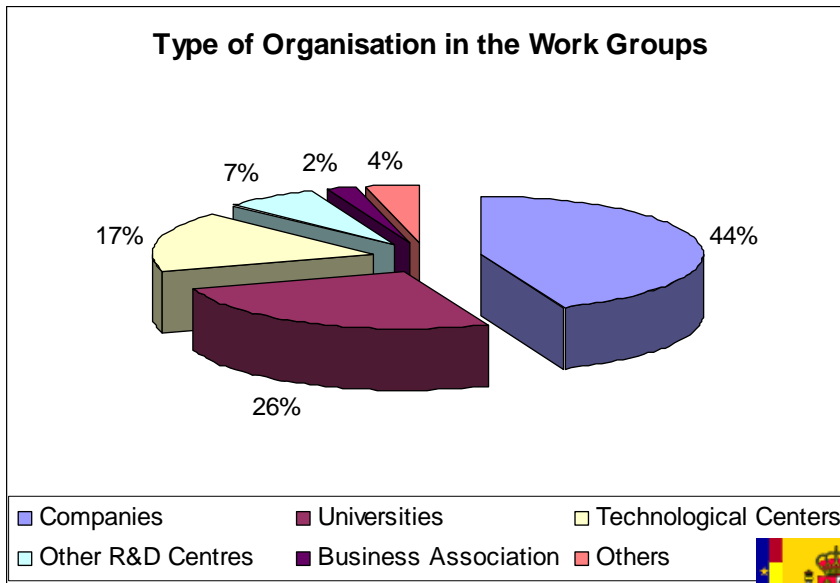
- Warehousing, packaging and handling
- Transport (road, sea, air, train) and infrastructures: flow management for freight and passengers
- 3PL-4PL and logistic services companies
- Logistics users from institutional and business sectors
- Manufacturing of transportation modes and construction of infrastructure are **NOT** included



*Work Groups directly related to the scope of ERTRAC

Number of Logistop members of the General Assembly: 562

- Work Group Members: 182 members

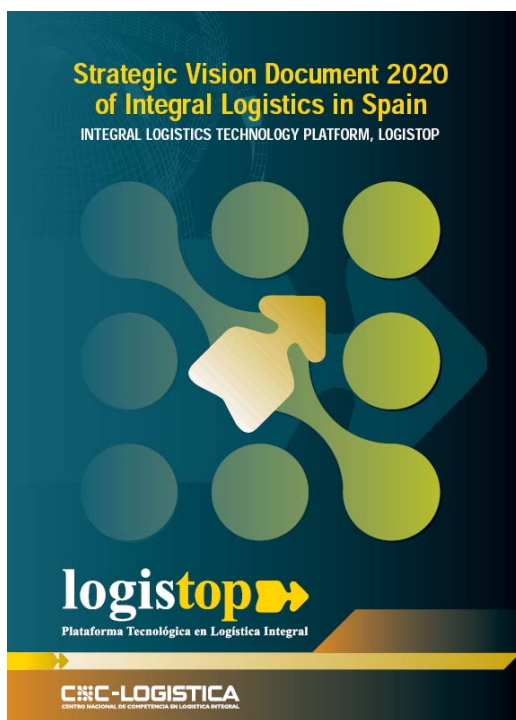


In this specific Work Group, the scope includes:

- Co-Modality/Intermodality
- Mobility, both for people and goods
- Transportation of goods
- Security of freight transport
- Public transport
- Environmental aspects of transportation of goods and people
- Development of transport policies

In this specific Work Group, the scope includes:

- Study and development of strategies, organization and business processes in the distribution of goods.
- To balance the efficient use of transport modes in the distribution of goods.
- To improve the use of Information and Communication Technologies (ICT) in the distribution of goods.



1. Present Panorama of Integral Logistics

- Introduction
- Situation in Spain
- SWOT analysis
- Conclusions

2. Strategic Fields

- Definition
- Key Actions in each Strategic Field
- Strategic Research Agenda

3. Conclusions

To obtain the document:

Mail to: info@logistop.org

Presented in SIL 2007

Strategic Fields

1. Sustainability
2. Safety
3. **Comodality/Intermodality**
4. Collaboration
5. Promotion of R&D and Innovation
6. Technology
7. Training and Knowledge

It determines those practice and frameworks which should be worked on to promote logistics activity opportunities and develop a competitive industry while maintaining sustainable development



ERTRAC Strategic Research Priorities was divided in four main research fields (*Steps to Implementation, March 2008*):

1. Urban Mobility
2. Energy Resources and Climate Change
3. Long Distance Freight Transport
4. Road Transport Safety

LOGISTOP has determined a group of key actions included in its SRA that are directly linked to the research fields of ERTRAC

- Urban Mobility ERTRAC

L
O
G
I
S
T
O
P

- Look for new solutions for mobility management, including concepts for disabled and elderly people mobility.
- Develop objective measures to improve mobility, to set zebra crossings, cycle ways, new alternatives of public transport, etc.
- Develop models and simulate solutions to the last mile problem, elaborate alternatives to urban distribution giving solutions for both individuals and cities.
- Develop models of door to door mobility emphasizing in the needs of disabled and elderly people

- Energy, Resources and Climate Change. ERTRAC

L
O
G
I
S
T
O
P

- Make an accurate forecast of goods and people traffic volumes to cover the needs taking care of social and environmental aspects
- Promotion of the rational use of the energy, as well as the R&D and Innovation of clean and renewable energies

- **Long Distance Freight Transport. ERTRAC**

L
O
G
I
S
T
O
P

- Analyze the freight and people flows and establish land corridors for transport.
- Optimization of long distance logistics
- Simulate and forecast the behavior of transport demands
- Look for markets for the triangulation of goods in the transport to optimize the capacities of the different modes

- **Road Transport Safety. ERTRAC**

L
O
G
I
S
T
O
P

- Develop safety protocols for the freight transport management and the load and unload processes.
- Improve the mechanisms of control and the environmental measures of safety in the transport of dangerous goods



logistop 

Plataforma Tecnológica en Logística Integral

www.logistop.org

Secretariat:

National Center of Excellence in Logistics
Avda. Gómez Laguna n. 25, 1st Floor

Zaragoza (SPAIN), 50009

Telephone: +34 976 077 607

Fax: +34 976 077 601

fliesa@cnc-logistica.org

