



Presentation of national platform activities

Road Maintenance Competence Cluster (MCC)
Finland

Keijo Pulkkinen

ERTRAC National Platforms
Workshop 4.-5.9.2008



Content

- Finnish Road Administration (FinnRA)
- Procurement Strategy
- Short history of the Maintenance Competence Cluster (MCC)
- Structure of MCC
- Activities
- Portal
- OSAKE -project
- Future activities



ERTRAC National Platforms
Workshop 4.-5.9.2008



Osioite http://www.tiehallinto.fi/servlet/page?_pageid=68&_dad=julia&_schema=PORTAL30&kieli=en&_pageid=68

Your Location: [EN] Main Page

TIEHALLINTO
FINNISH ROAD ADMINISTRATION

Finnish Road Administration

Travel and traffic information

Travel and transportation

Publications

Road Projects

Road Management

Useful

Choose...

[På svenska](#)

FINNISH ROAD ADMINISTRATION

Welcome to Finnish Road Administration

Finnish Road Administration is responsible for Finland's highway network. Our mission is to provide smooth, safe and environmentally friendly road connections. On these pages you will find general facts about the Finnish road network, information about road and weather conditions, transport permits as well as research and development.

Real-time traffic information
Road weather conditions, roadworks on public roads, border traffic and other traffic information is available behind the **Travel and Traffic Information** button.

TRAVEL AND TRANSPORTATION

Tourism

Beside the destination also the journey can be enjoyable! A well-planned route offers plenty to see for the whole family: Scenic Routes, historic bridges and roads, road art and easily accessible rest areas. Although the traffic culture in Finland can be seen moderate, Finnish Road Administration offers a lot of useful information for both unhurried

Oulu

Weather | Regions

Road 4, Oulu, Kuivasjärvi
28.08.2008 09:25
Air: 10.7 °C
Road: 14.0 °C
Precipit.: No rain
Road cond.: Dry

Road 27, Ylivieska, Raudaskylä
28.08.2008 09:25

ERTRAC National Platforms
Workshop 4.-5.9.2008



Procurement strategy

- The premise for developing the maintenance competence cluster is the Finnish Road Administration's objective to promote competence development in the field.
- Pursuant to the procurement strategy of the Finnish Road Administration:
In order to safeguard competence a pilot project for development of the competence clusters in co-operation with actors in the field, educational institutions and research institutes will be created.

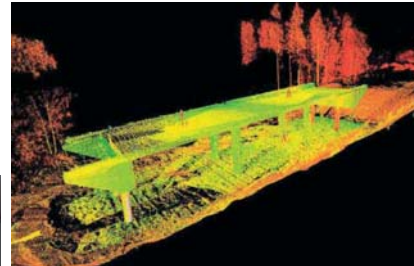


ERTRAC National Platforms
Workshop 4.-5.9.2008



Procurement strategy

- Maintenance competence cluster is a formal requirement-free virtual community, the central objective of which is to offer a platform for innovations and technologies research.
- In this connection maintenance mainly refers to road paving, road markings and bridge repairs.



ERTRAC National Platforms
Workshop 4.-5.9.2008



Short history of MCC

Year 2006

- Development of operations model
- Discussions with Finnra experts
- Starting of the first practical activities

Years 2007 - 2008

- Focusing on certain activities for example projects and thesis studies
- Development of service agreements
- OSAKE -project, competency and innovation



ERTRAC National Platforms
Workshop 4.-5.9.2008



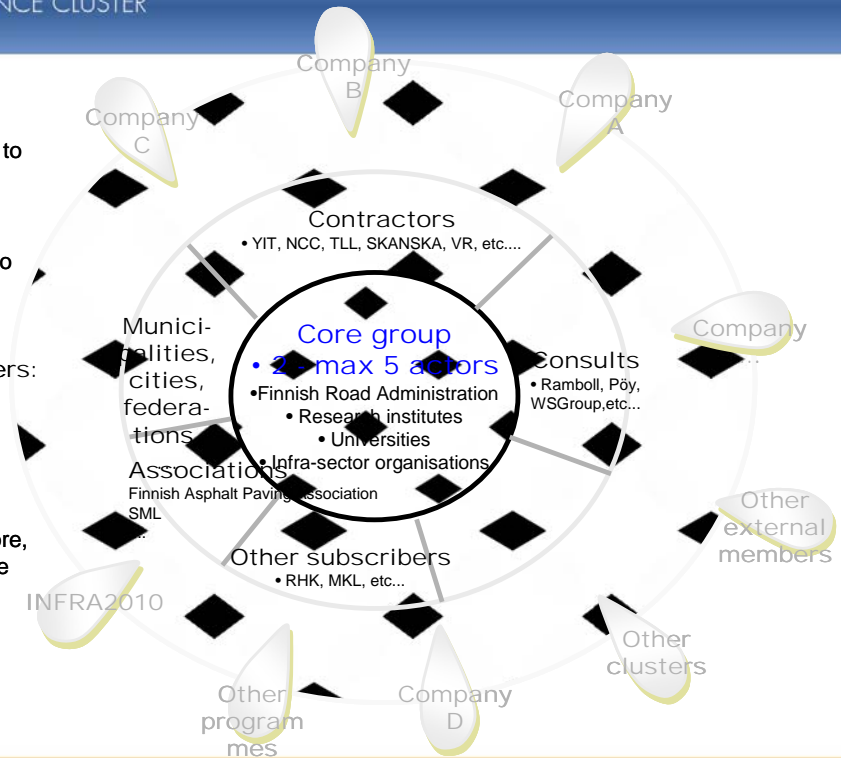
Structure of MCC

Core group:
Strongly committed to cluster operation

Ring actors:
Active participants to cluster operation

External members:
Active, utilise cluster operation

MOTTO:
The closer to the core, the more input in the cluster



ERTRAC National Platforms
Workshop 4.-5.9.2008



Main activities

- Events
- Pilot project in the Infra 2010 - development programme
- Other development projects
- Themes
- Development of maintenance service agreements
- Development and updating of the MCC -portal
- Participation of Finnras groups of experts



ERTRAC National Platforms
Workshop 4.-5.9.2008



Portal

Who PAVES YOUR WAY TO THE FUTURE?

What's new? Thesis (0) Projects (0) INFRA2010 (0) Forum (0)

New approaches to developing infra sector expertise

New operating models are being sought to boost cooperation between actors and to develop expertise within the infra sector. As part of the Infra2010 development programme, the OSAKE project was launched with the objective of producing an operations model and tools with which actors in the sector can jointly develop their competency and expertise within specific areas of operation. The results of the OSAKE project, which is implemented as a joint venture between Finnra and Infra ry, are scheduled to be implemented by the end of 2008. Oy Swot Consulting Finland Ltd has been selected to implement the project.

Development programme to boost sector productivity

Launched in 2006 by sector companies and organisations, the Infra2010 development programme aims at raising the productivity and attractiveness of the infra sector. The purpose of the programme is to bring together leading infra sector research and development projects as a single body in order to boost the sector's competitiveness throughout

Core group: Strongly committed to cluster operation

Ring actors: Active participants to cluster operations

Contractors: VTT, HCL, Suominen, etc.

ERTRAC National Platforms
Workshop 4.-5.9.2008



OSAKE -project, competency and innovation

- The pilot project's core objective is to produce an operations model to assist infra sector actors in jointly developing defined areas of operations, such as road maintenance working methods and expertise.
- The cluster-oriented operations model is new to the infra sector and, in particular, to road maintenance, and requires further development in order to operate in a manner that benefits all participants.

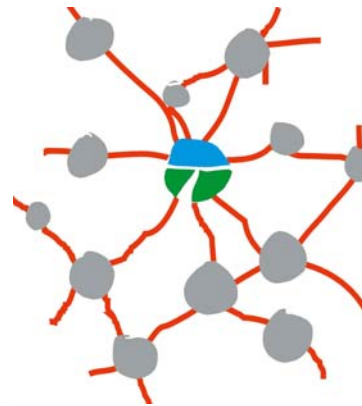


ERTRAC National Platforms
Workshop 4.-5.9.2008



OSAKE -project, competency and innovation

- A successfully developed operations model will also provide a good basis for the development planning of other infra sector competencies.
- The pilot project also draws on and supports two other "Competency and innovation" projects within the Infra 2010 programme theme.



ERTRAC National Platforms
Workshop 4.-5.9.2008



Future activities

- Internationalization of activities:
 - Co-operation with Norwegian project "Development of Expertise within Road Maintenance"
 - Participation in ERTRAC National Platforms work
- To utilize the results of the OSAKE -project
- In general level: To bring out necessary and even more efficient methods of learning and to achieve better competence to infra sector



ERTRAC National Platforms
Workshop 4.-5.9.2008